

# Drawing with Forms



## What are we covering today?

Yesterday, we saw that creating the illusion of simple forms is easy with a little bit of tone and value.

Today, we'll continue working with the concept of form and take a look at how we can use form to lay out a drawing quickly and easily - even if the subject may seem complex.

We've already learned that we can simplify subjects down into basic shapes and for most of the subjects that we draw - basic shapes will get the job done. But in some circumstances, it may be helpful to break the subject down into basic forms instead.

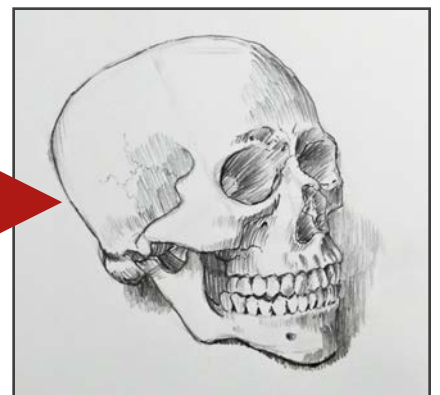
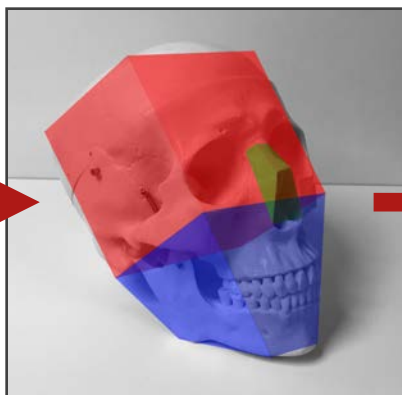


## Today's Mindset

For some subjects, using simplified shapes may not give us enough information regarding the form of the subject. After all, it is the form of the subject that is most important. For subjects such as these, we can look for basic forms instead.

And that leads us to today's mindset...

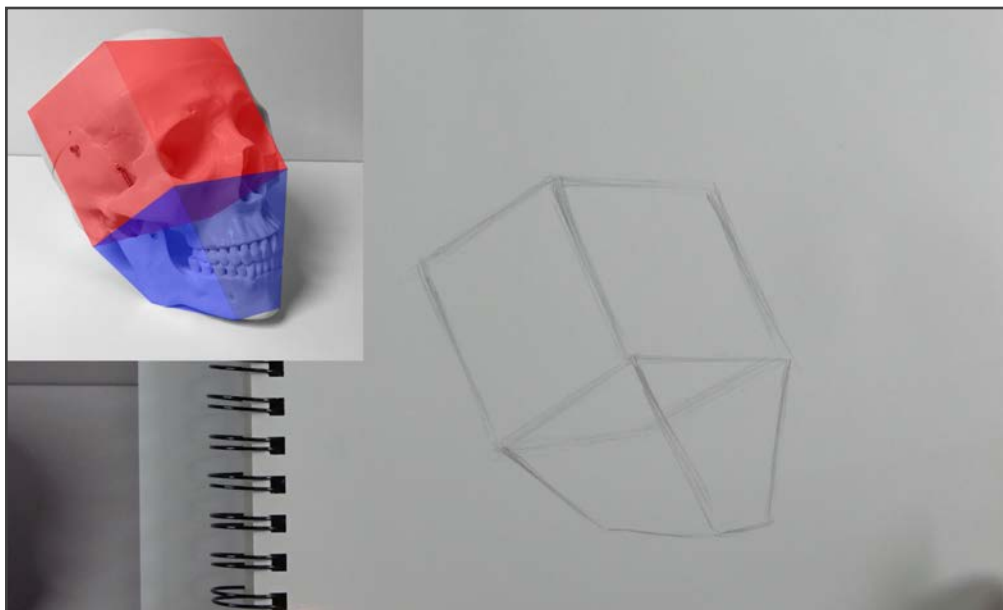
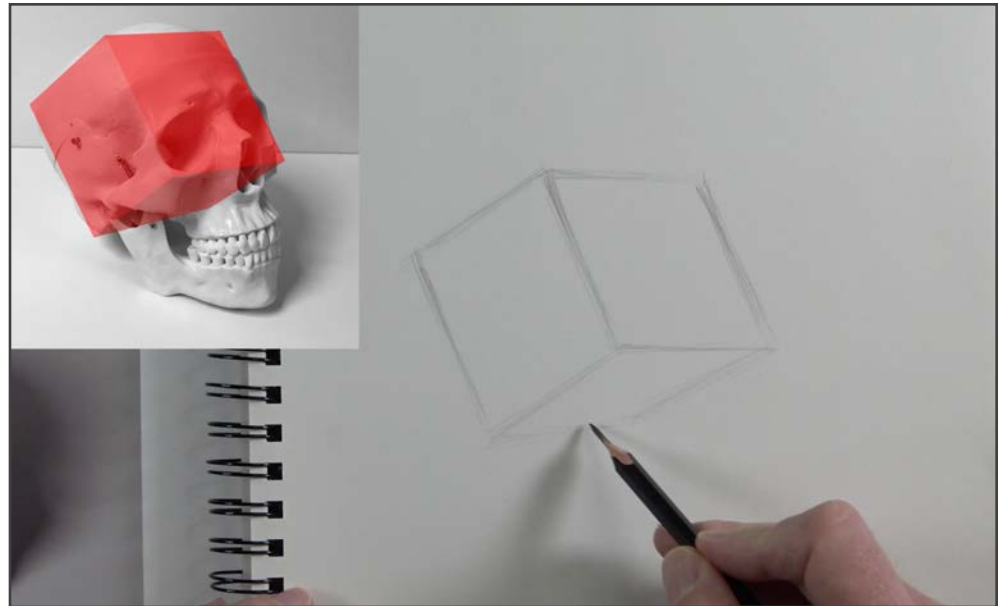
"Complex subjects may be broken down into basic forms. If we draw these basic forms first, we have a better chance of capturing the subject accurately in a drawing."



## Today's Drawing Exercise

Today we'll create a sketch of a subject that may seem difficult on the surface. To simplify the process, we'll first isolate basic forms. Once we have the basic forms in place, we can define the contour lines and lastly add a touch of value.

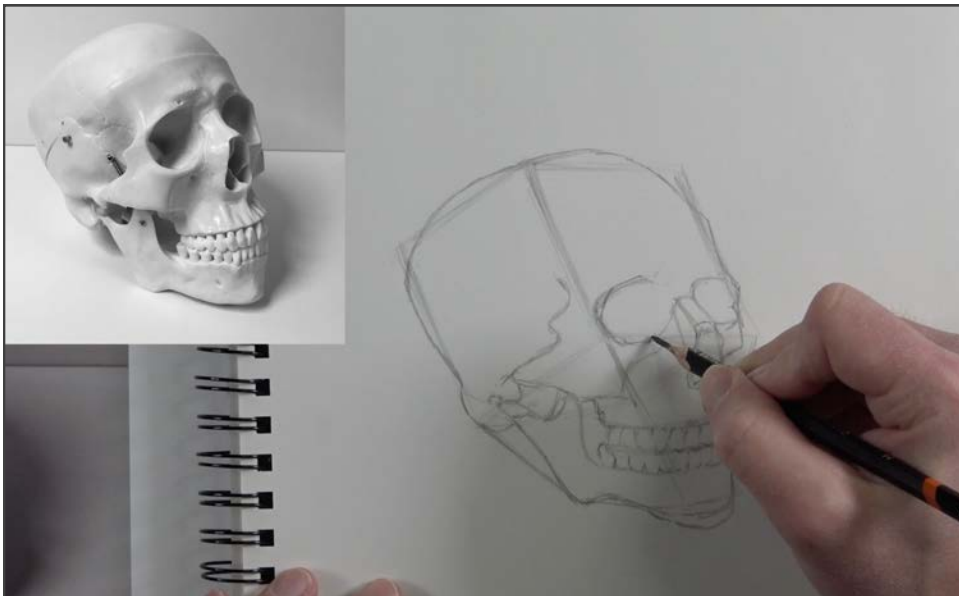
We'll locate our first basic form. In this case, we can simplify the cranium of the skull into a cube. We'll draw a cube on the drawing surface that mimics what we view on the reference.



Our second basic form resembles an upside down pyramid with the tip removed. This basic form is created by simplifying the lower portion of the skull.

With two of our basic forms in place, we can begin establishing the contour lines. As we draw the contour lines, we'll use the basic forms as a guide.

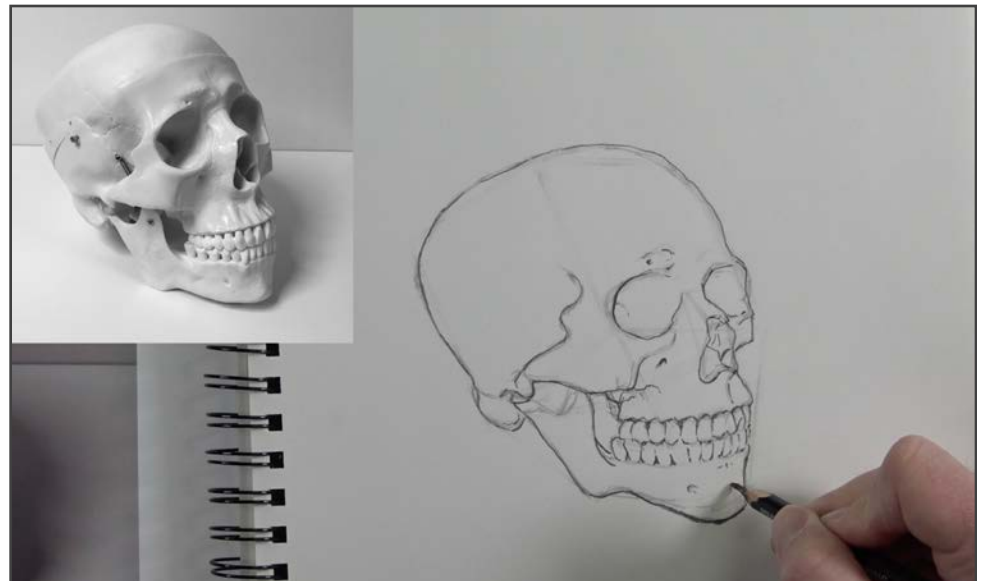
An additional form is drawn for the collection of bones that make up the nose.



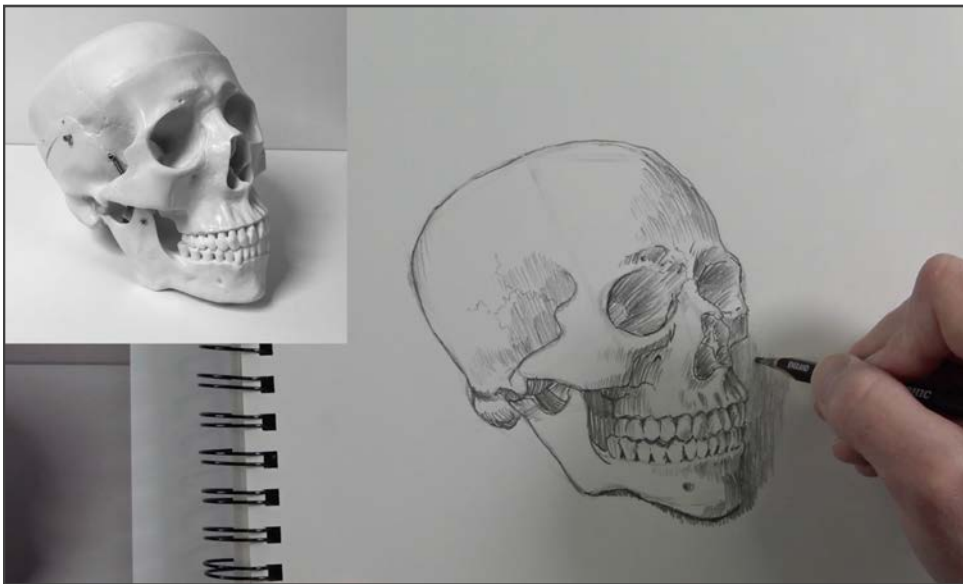
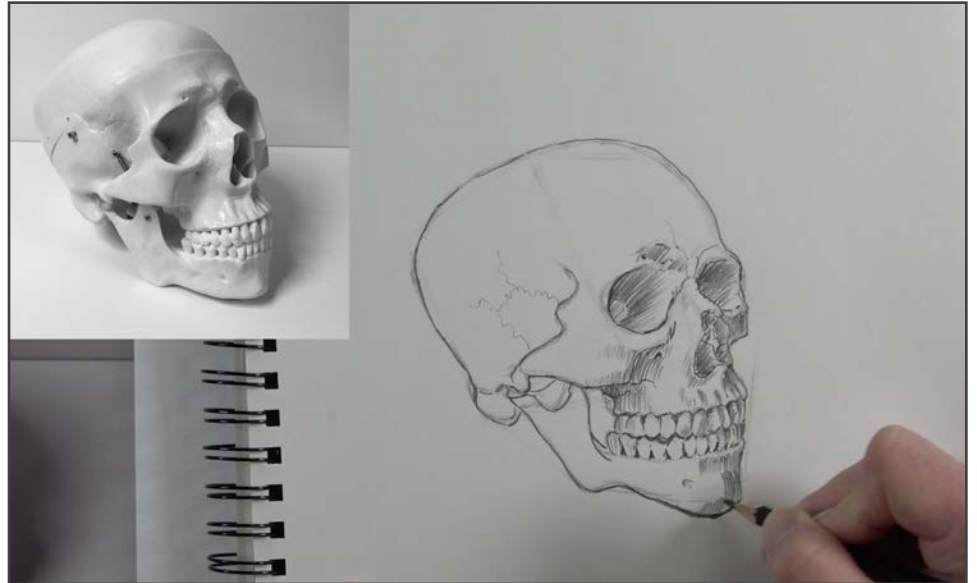
We'll simply keep working our way around the skull, adding additional contour lines.

Once the initial sketch of the contours is in place, we can erase any stray marks with a kneaded eraser.

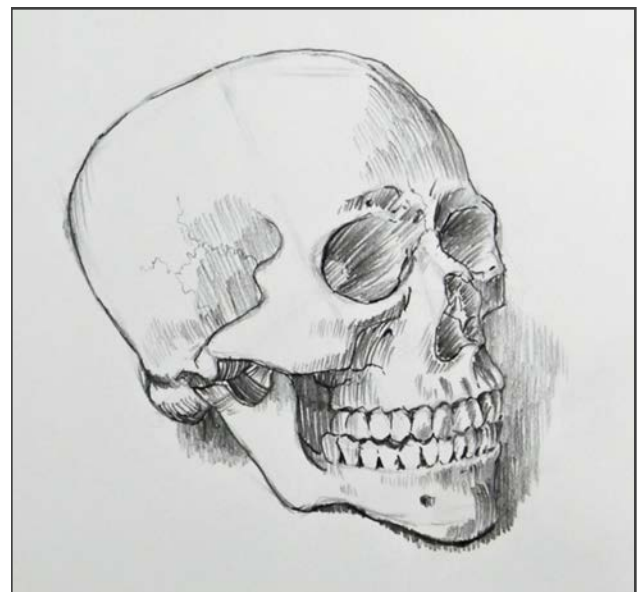
Since we are confident with our sketch, we can go back over the contour lines, strengthening them and adding a bit of variety to the width of line.



We'll quickly and loosely add a bit of value to help further communicate the form. We'll use mostly hatching to do so. As we add these marks, we'll consider the form of the skull and ensure that our lines flow over the form.



We'll add the cast shadow underneath and behind the skull, completing the drawing.



Today we learned that we can break complex subjects down into basic forms. By drawing these basic forms first, we have a better chance of capturing the subject accurately in a drawing.

Tomorrow, we'll begin our look at creating the illusion of texture in a drawing.